

Priority subjects in the BSc program:

- ◆ Big Game Management,
- ◆ Carnivores Ecology,
- ◆ Forest Habitat Management,
- ◆ Game Damage Control and Assessment,
- ◆ GIS and Geodesy,
- ◆ International Wildlife
- ◆ Monitoring and Data Collection,
- ◆ Small Game Management,
- ◆ Trophy Evaluation Systems,
- ◆ Urban Wildlife Management,
- ◆ Wildlife Biology and Conservation,
- ◆ Wildlife Ethology and Behavioral Ecology,
- ◆ Wildlife Habitat Management,
- ◆ Wildlife Research Methodology,
- ◆ Wildlife Tourism and Economics

Priority subjects in the MSc program:

- ◆ Carnivores ecology
- ◆ Ethology and behavioural ecology
- ◆ Game damages and damage estimation
- ◆ Game hygiene and meat handling
- ◆ Herbivores feeding biology
- ◆ Integrated big game management
- ◆ Integrated small game management
- ◆ International wildlife issues
- ◆ Introduction to biomathematics
- ◆ Research methods of wildlife biology
- ◆ Selected chapters of wildlife biology
- ◆ Social issues in nature and wildlife conservation
- ◆ Spatial methods in wildlife management
- ◆ Wildlife molecular genetics
- ◆ Wildlife tourism

Our Contacts:

MATE
Institute for Wildlife Management
and
Nature Conservation



2100 Gödöllő, Páter Károly utca 1.

Email:

vadgazdalkodas@uni-mate.hu

Phone:

+36 28/522 000/1600



Website:

<https://uni-mate.hu>

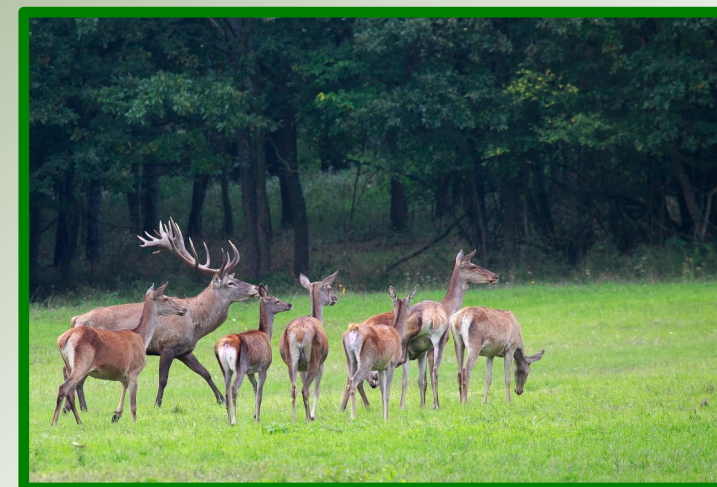
MATE

HUNGARIAN UNIVERSITY OF
AGRICULTURE AND LIFE SCIENCES

Institute for Wildlife Management and
Nature Conservation

MATE
Institute for Wildlife
Management and
Nature Conservation

Wildlife Management
Engineering BSc, MSc



The Wildlife Programs in General Wildlife Management Engineering

This programme aims to educate wildlife professionals who can manage projects in wildlife management and nature conservation based on applied ecology and principles of renewable natural resource management.

The programmes covers various aspects of the conservation and management of wildlife and international laws and conventions concerning wildlife. It incorporates a field trip, an individual research project, and practical experience in a research or management organization.

The instruction will prepare the student for a career in national or international organizations where sound knowledge regarding the conservation and management of wildlife is essential.

The responsible department regarding the programme is the Department of Wildlife Biology and Management (Institute for Wildlife Management and Nature Conservation).

- **Full time training**
- **Training place: Szent István Campus Gödöllő**



BSc in Wildlife Management Engineering

Graduated wildlife managers will meet the profession's standards and will be familiar with and able to maintain the rules of wildlife and nature conservation.

Successful graduates will be qualified to work in game farms and joint projects with agricultural companies and forestry, fishery, and rural development positions. Other possibilities include teaching the basics of nature conservation and working with hunting tourism operators.



The essential courses are taught by professors of the Institute for Wildlife Management and Nature Conservation, invited experts on particular subjects, or professionals with real-life knowledge and experiences.

Students are obliged to take exams in both their compulsory and elective subjects. Qualified graduates have the opportunity to continue their studies in the MSc Programme for Wildlife Management Engineering.

MSc in Wildlife Management Engineering



The MSc Program
in Wildlife

Management Engineering focuses on the traditional knowledge, recent developments, modern tools, and new challenges of applied ecology and wildlife science. It integrates theoretical principles, practical evolutions, elements of the human dimension of wildlife management, and quantitative methods to educate professionals for coping with the challenges of the 21st century.

Prerequisites: BSc or equivalent graduate degree in Agriculture, Agronomy, Plant Production, or Animal Science (or equivalent in Veterinary Science), Biology, Ecology, Nature Conservation, or Management of Natural Resource is required. Applicants should have an introductory knowledge of mathematics and statistics. In addition, applicants must show competence in both written and spoken English.

The program can also be regarded as the first step into a research career. PhD studies in wildlife sciences are also available in the Doctoral School of Animal Sciences at the University.